

# NEMATOIDES ENTOMOPATOGÊNICOS

## IDENTIFICAÇÃO DE GÊNEROS

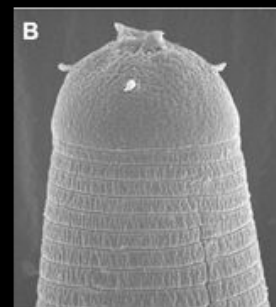
*Heterorhabditis*

*Neosteinerema*

*Steinernema*



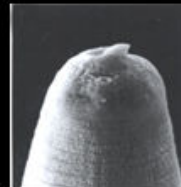
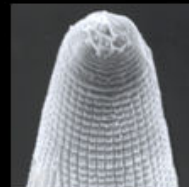
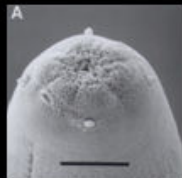
Khuong Ba Nguyen  
University of Florida



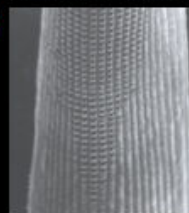
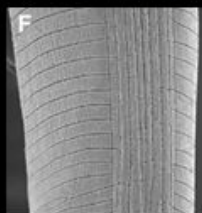
Como diferenciar

*Steinernema*

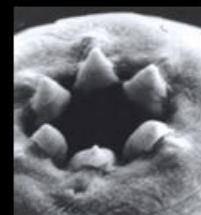
*Heterorhabditis*



Juvenis  
infectantes



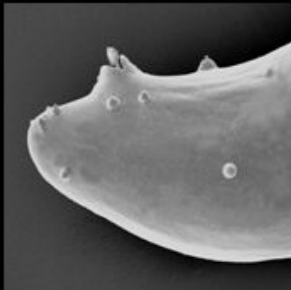
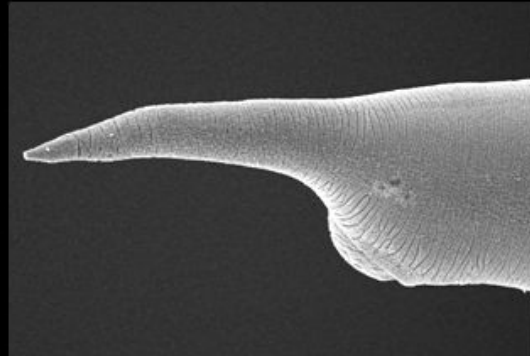
Fêmeas





*Steinernema*  
Cauda da fêmea  
(mais curta que a largura  
do corpo ao nível do ânus)

*Heterorhabditis*  
Cauda da fêmea  
(mais longa que a largura  
do corpo ao nível do ânus)



sem  
bursa

## Machos

### Cauda



com  
bursa



largo /  
robusto

### Espículo



esguio /  
delicado



34-65  $\mu\text{m}$

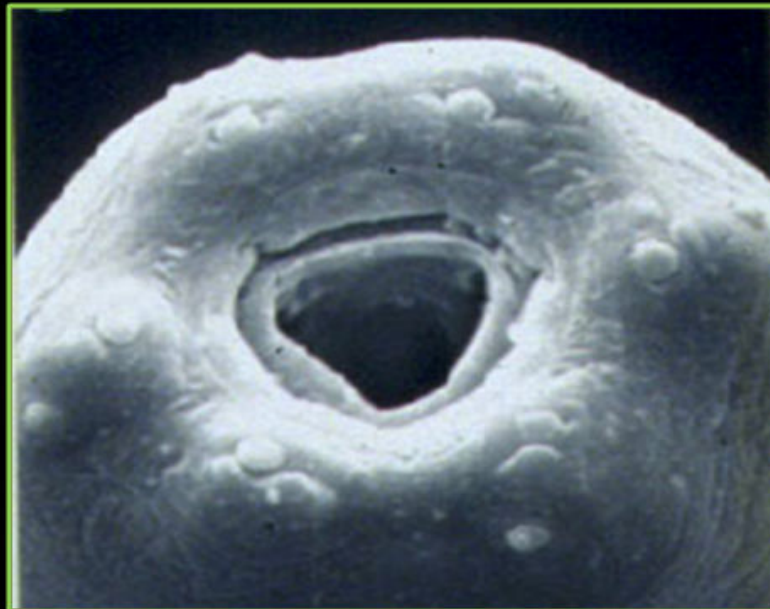
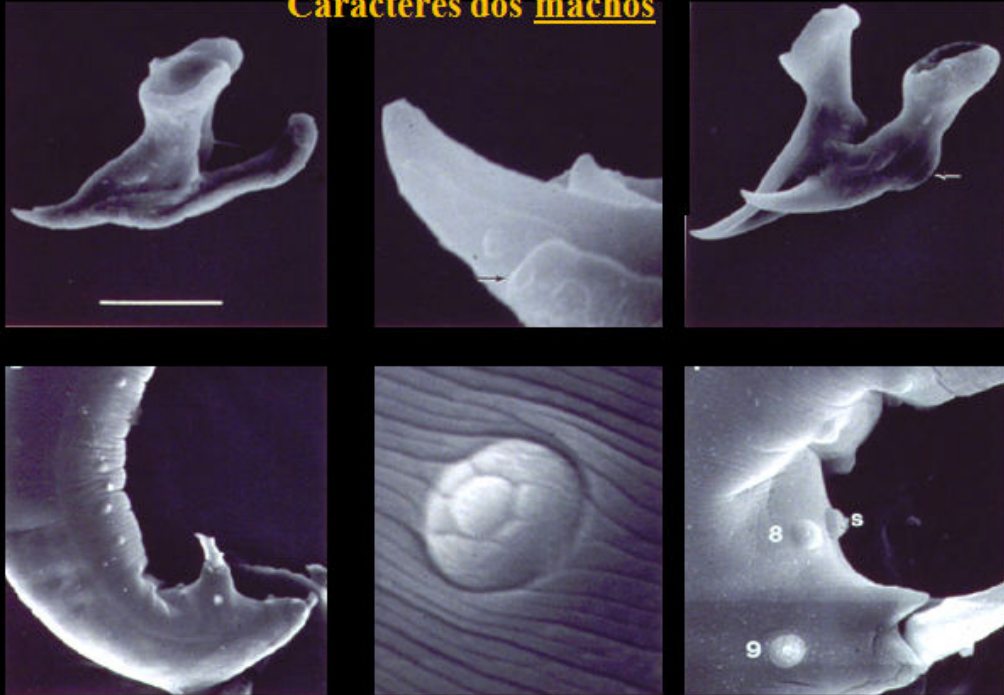
### Gubernáculo



19-23  $\mu\text{m}$

*Neosteinernema*

Caracteres dos machos



Término anterior e abertura oral em fêmeas

